

- TWO DOUBLE BEDROOMS • ENSUITE SHOWER ROOM • BALCONY • COMMUNAL GARDENS •
- EXCELLENT TRANSPORT LINKS • ALLOCATED PARKING

☎ 02088 844 844

✉ info@kingsly.group

📍 315 Chase Road, Southgate, London N14 6JT

👉 kingsly.group



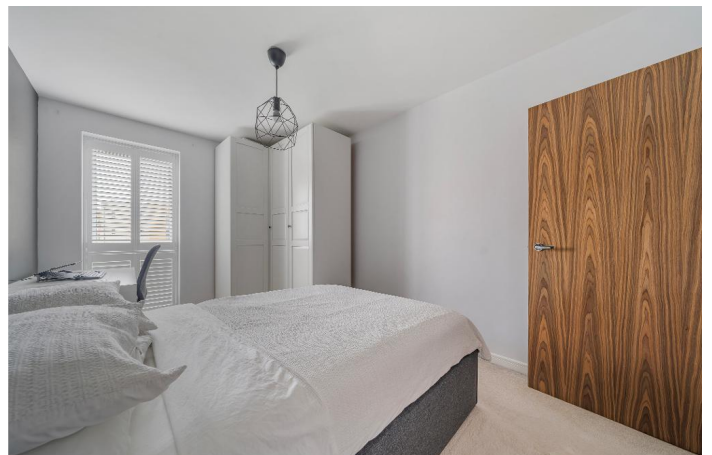
Description

Kingsly Estate Agents & Surveyors are delighted to offer to the market this stunning two bedroom property. This immaculate property benefits from an open plan kitchen/living room leading to a balcony overlooking the communal gardens, two spacious double bedrooms, ensuite, family bathroom, and allocated parking.

Location

This stunning property is situated in the highly sought after new property development in Barking Riverside. The property has excellent transport links and is served by Barking Riverside (0.5 miles)(Suffragatte Line) also benefits from easy access to the A13 (1.5 Miles)

The property is in close proximity to a number of schools rated good and excellent by Ofsted making this property ideal for young families. These include George Carey Church of England Primary School (0.1 mile)(Ofsted rating Good) Riverside Primary School (0.5 miles)(Ofsted rating Good) Riverside School (0.5 miles)(Ofsted rating Outstanding)



☎ 02088 844 844

✉ info@kingsly.group

📍 315 Chase Road, Southgate, London N14 6JT

👉 kingsly.group





☎ 02088 844 844

✉ info@kingsly.group

📍 315 Chase Road, Southgate, London N14 6JT

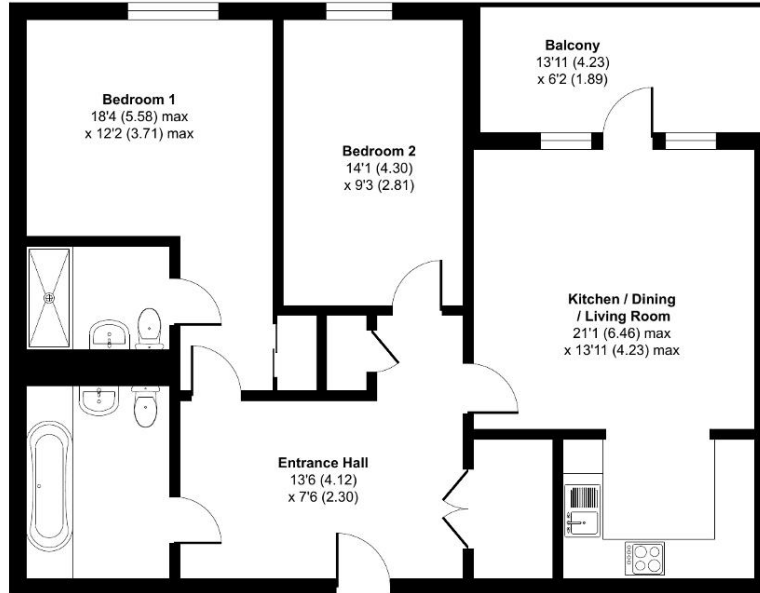
👉 kingsly.group



Reg. Company: Kingsly Estate Agents Limited. Reg. Number: 15835275
Reg. Address: 5 Braemore Court, Cockfosters Road, Barnet, EN4 0AE, England

Handley Page Road, Barking, IG11

Approximate Area = 899 sq ft / 83.5 sq m
For identification only - Not to scale



FIRST FLOOR

Floor plan produced in accordance with RICS Property Measurement 2nd Edition, Incorporating International Property Measurement Standards (IPMS2 Residential). © nichecom 2025. Produced for Kingsly Estate Agents, Southgate. REF: 1230670

Score	Energy rating	Current	Potential
92+	A		
81-91	B	84 B	84 B
69-80	C		
55-68	D		
39-54	E		
21-38	F		
1-20	G		

