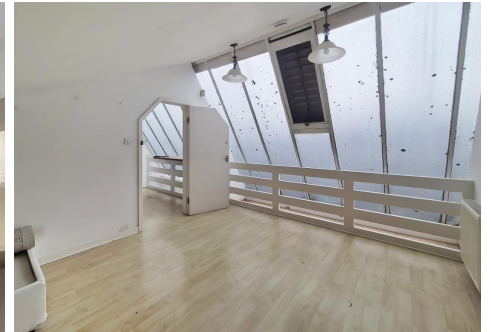




KINGSLY ESTATE AGENTS

Commercial for Rent - £2,000 per month

278 Alma Road, Enfield, London, UK, EN3 7BB



• 100 SQM • OFFICE AREA ON THE FIRST FLOOR • 3-PHASE POWER • 3 METER HIGH CEILING

☎ 02088 844 844

✉ info@kingsly.group

📍 315 Chase Road, Southgate, London N14 6JT

👉 kingsly.group



Reg. Company: Kingsly Estate Agents Limited. Reg. Number: 15835275
Reg. Address: 5 Braemore Court, Cockfosters Road, Barnet, EN4 0AE, England

Description

Kingsly Estate Agents are delighted to present this unique warehouse unit at Alexandra Business Centre. This versatile property offers a total space of 100 sqm, with 50 sqm on the ground floor and 50 sqm on the first floor.

The ground floor comprises an empty shell with a 3-phase power supply, making it ideal for a variety of commercial uses. The ceiling height on the ground floor is 3 meters, offering ample space for storage, workstations, or light industrial use. The ground floor also benefits from rolling shutters



☎ 02088 844 844

✉ info@kingsly.group

📍 315 Chase Road, Southgate, London N14 6JT

👉 kingsly.group

