



KINGSLY ESTATE AGENTS

2 Bedroom Flat for Sale - Guide Price £280,000

Leopold Road, London, N18 2EW



• TWO BEDROOM • LEASEHOLD • EPC RATING C • COUNCIL TAX BAND C

☎ 02088 844 844

✉ info@kingsly.group

📍 315 Chase Road, Southgate, London N14 6JT

👉 kingsly.group



Reg. Company: Kingsly Estate Agents Limited. Reg. Number: 15835275
Reg. Address: 5 Braemore Court, Cockfosters Road, Barnet, EN4 0AE, England

Description

Offering to the market this stunning two-bedroom apartment. The property benefits from two good-sized double bedrooms, a family bathroom, and a bright modern open-plan kitchen/living room.

Location

This property is in an excellent location which benefits from easy access to the A406, A10, and M25. Local stations include Meridian Water Station (0.02 Miles) Northumberland Park Station (0.7 miles) which offer direct access into central London. The property is also in close proximity to Fore Street (0.7 miles) which offer a host of supermarkets, shops and restaurants.



☎ 02088 844 844

✉ info@kingsly.group

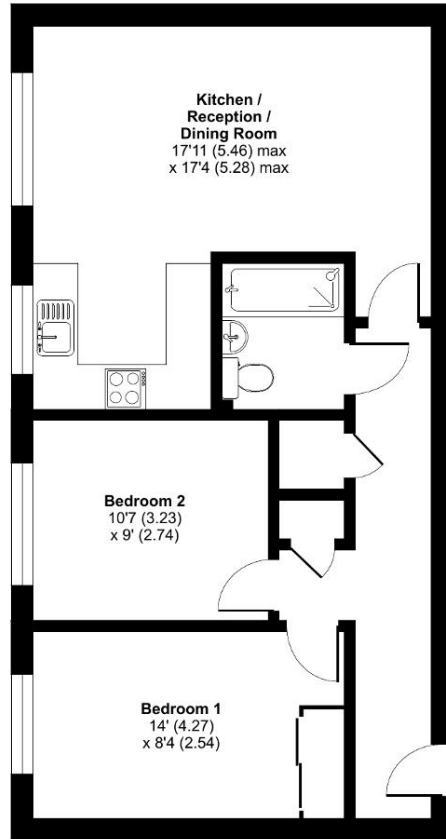
📍 315 Chase Road, Southgate, London N14 6JT

👉 kingsly.group



Leopold Road, London, N18

Approximate Area = 639 sq ft / 59.4 sq m
For identification only - Not to scale



SECOND FLOOR

Floor plan produced in accordance with RICS Property Measurement 2nd Edition, Incorporating International Property Measurement Standards (IPMS2 Residential). © nrichcom 2025. Produced for Kingsly Estate Agents, Southgate. REF: 1262784

Score	Energy rating	Current	Potential
92+	A		
81-91	B		82 B
69-80	C	69 C	
55-68	D		
39-54	E		
21-38	F		
1-20	G		

02088 844 844

info@kingsly.group

315 Chase Road, Southgate, London N14 6JT

kingsly.group

