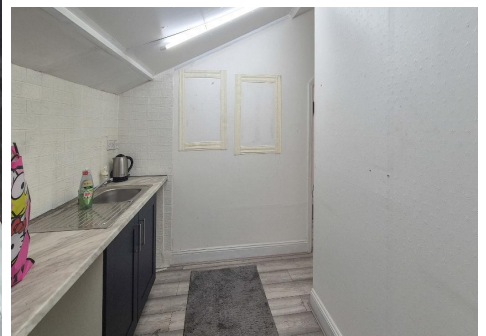
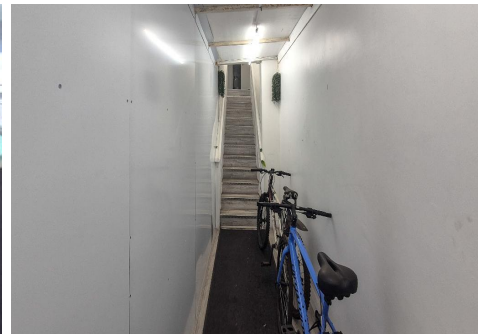
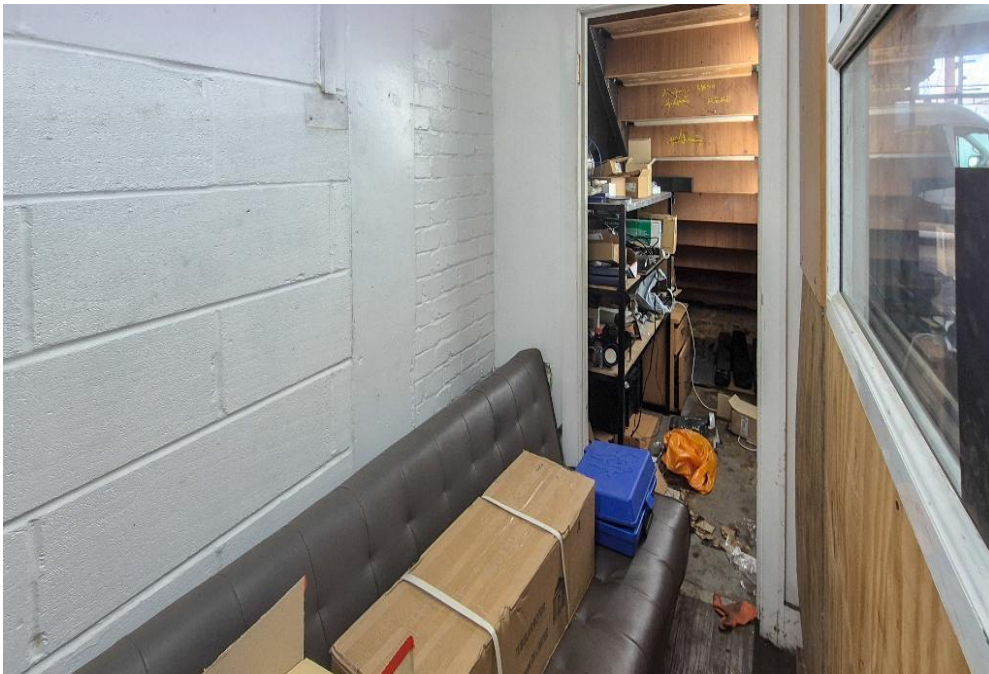




KINGSLY ESTATE AGENTS

Commercial for Rent - **£2,000 per month**

Hall Lane, Chingford, London, UK, E4 8DJ



• INDUSTRIAL UNIT • FRI

☎ 02088 844 844

✉ [info@kingsly.group](mailto:info@kingsly.group)

📍 315 Chase Road, Southgate, London N14 6JT

👉 [kingsly.group](http://kingsly.group)



Reg. Company: Kingsly Estate Agents Limited. Reg. Number: 15835275  
Reg. Address: 5 Braemore Court, Cockfosters Road, Barnet, EN4 0AE, England

## Description

Available to lease (FRI) is this well-positioned industrial unit located within the established Chingford Industrial Centre, offering a practical and secure workspace ideal for a variety of commercial and light industrial uses.

Unit provides a functional layout with ample internal space suitable for storage, distribution, production or trade counter operations (subject to appropriate consents). The premises benefit from a full-height roller shutter door, concrete flooring, good eaves height and first floor office, kitchen and shower.



The site is gated and monitored, offering secure access and on-site parking.

## Location

Situated just off Hall Lane (A1009), the location provides convenient access to the A406 North Circular Road, M11 and M25 motorways, making it highly suitable for businesses requiring easy logistical connectivity across London and beyond.

Please note: applications related to car mechanics, car body repairs or car painting will not be considered.

Available immediately on flexible terms. For further details or to arrange a viewing, please contact us.

☎ 02088 844 844

✉ [info@kingsly.group](mailto:info@kingsly.group)

📍 315 Chase Road, Southgate, London N14 6JT

🐾 [kingsly.group](http://kingsly.group)

