



KINGSLY ESTATE AGENTS

1 Bedroom Flat for Sale - £250,000

Cherry Blossom Close, Palmers Green, London, UK, N13 6BQ



• ONE BEDROOM • FIRST FLOOR FLAT • LEASEHOLD • COUNCIL TAX BAND B • EPC RATING C

☎ 02088 844 844

✉ info@kingsly.group

📍 315 Chase Road, Southgate, London N14 6JT

👉 kingsly.group



Reg. Company: Kingsly Estate Agents Limited. Reg. Number: 15835275
Reg. Address: 5 Braemore Court, Cockfosters Road, Barnet, EN4 0AE, England

Description

Located in a quiet residential cul-de-sac in the heart of Palmers Green, this well-presented one-bedroom first floor flat at Cherry Blossom Close offers a fantastic opportunity for first-time buyers, downsizers, or investors alike.

The property comprises a bright and spacious reception room, a separate fitted kitchen, a well-proportioned double bedroom, and a modern bathroom. Set within a purpose-built development, the flat benefits from allocated residents' parking, communal gardens, and secure entry.

Offered with a long lease, this attractive home combines comfort and convenience in a sought-after North London location. Early viewing is highly recommended.

Location

Ideally positioned within easy reach of Palmers Green High Street, with its range of shops, cafes, and amenities, as well as excellent transport links via Palmers Green Station and nearby bus routes providing direct access into central London.



☎ 02088 844 844

✉ info@kingsly.group

📍 315 Chase Road, Southgate, London N14 6JT

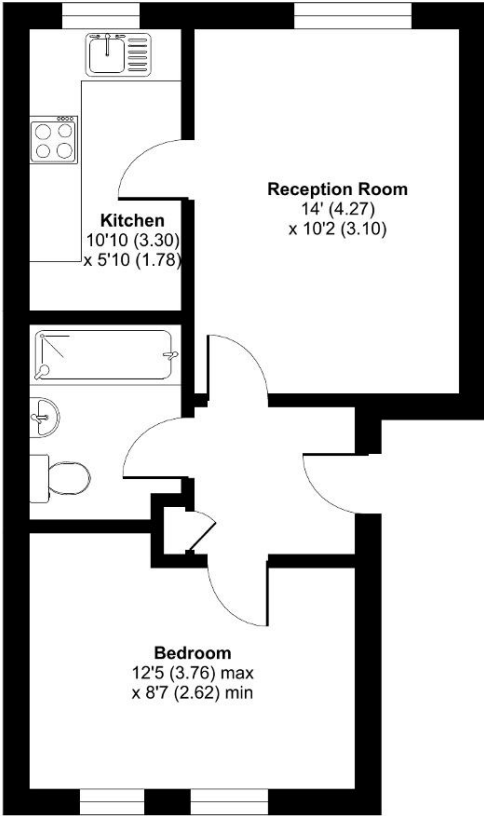
👉 [kingsly.group](https://www.kingsly.group)



Reg. Company: Kingsly Estate Agents Limited. Reg. Number: 15835275
Reg. Address: 5 Braemore Court, Cockfosters Road, Barnet, EN4 0AE, England

Cherry Blossom Close, London, N13

Approximate Area = 421 sq ft / 39.1 sq m
For identification only - Not to scale



FIRST FLOOR

Floor plan produced in accordance with RICS Property Measurement 2nd Edition, Incorporating International Property Measurement Standards (IPMS2 Residential). ©nichecom 2025. Produced for Kingsly Estate Agents, Southgate. REF: 1331891

Score	Energy rating	Current	Potential
92+	A		
81-91	B		84 B
69-80	C	69 C	
55-68	D		
39-54	E		
21-38	F		
1-20	G		

